

LICK HOLLOW AREA and WHITETAIL TRAIL

The Forbes State Forest contains many miles of maintained trails, designed for a variety of recreational pursuits. Trails are designed for hiking, cross-country skiing, snowmobiling, equestrian use, and mountain biking. Some are for a specific use, while others may be used for several activities. All hiking trails are marked with red rectangles, while ski trails are marked with blue rectangles.

Lick Hollow State Forest Picnic Area – This beautiful picnic area is located off Route 40, along Lick Run. It is open from Memorial Day to Labor Day, 11:00 AM to dusk. It is closed on Tuesday's and Wednesday's during this time. This area features picnic tables, charcoal grills, drinking water, and restrooms for public use. The Lick Hollow Nature Trail and Pine Knob Trail are accessed from the picnic area.

Lick Hollow Nature Trail – This 3/4 mile long trail is a leisurely walk through the picnic area. The trail is self-guided, and interpretive pamphlets can be found at the picnic area. It will take about an hour to walk the trail and stop at each of the 20 interpretive stops. Along the way, you will learn about a few of the tree species native to this area, how riparian areas are important for wildlife, about insects and disease, and other pertinent topics.

Pine Knob Trail – This trail is just about 2 miles long, and stretches from the Lick Hollow State Forest Picnic Area, to the Pine Knob Overlook. Pine Knob Trail parallels Lick Run for part of its length, but it is a rugged trail for the most part. The elevation of this trail changes 1,600 vertical feet from its lowest point of 1,440 feet above sea level at the picnic area, to 3,040 feet at the Pine Knob Overlook. When hiking this trail, be prepared for a 4 hour round trip. Pack plenty of liquids during the summer, and warm clothes in the winter.

Pine Knob Overlook – This scenic view overlooks the area from Uniontown south to Smithfield. The access from Pine Knob Road up to the overlook has been closed off due to vandalism of the overlook site.

Whitetail Trail – The Whitetail Trail spans approximately 9.5 miles from Pine Knob Trail in the north, to the Quebec Run Wild Area in the south. Along this route, you will pass through some rugged and beautiful scenery, as you traverse the Chestnut Ridge. Best access is at the Lick Hollow State Forest Picnic Area via Pine Knob Trail, Quebec Run Wild Area north gate, or midway at SGL 138 parking area along Skyline Drive. You can make a challenging 11.5 mile traverse, by starting at Lick Hollow and incorporating Pine Knob Trail, and ending at Quebec Run.

FOREST DISTRICT HEADQUARTERS

**Bureau of Forestry
Forbes Forest District 4
1291 Route 30, P.O. Box 519
Laughlintown, PA 15655-0519
Tele: (724) 238-1200
Email: FD04@state.pa.us**

FORBES STATE FOREST

Pennsylvania contains about 17 million acres of forestland. Of this total, over two million acres are in the state forest system, which is publicly owned and managed by the Department of Conservation and Natural Resources, Bureau of Forestry. The Forbes State Forest comprises about 60,000 acres located in Westmoreland, Somerset and Fayette Counties.

State Forests provide clean water, recreation, habitat for plants and animals, places to enjoy the tranquility of nature, and produce some of the most valuable hardwood timber on earth.

CAMPING INFORMATION

Camping in the Forbes State Forest is restricted to backpack-type camping, except for several designated motorized sites. Camping out of vehicles or campers is not permitted. Permits for camping are required only if campers stay more than one night at any campsite, or camps at a designated motorized site. All campers are encouraged to obtain a permit in case you are overdue or if someone needs to reach you. Campers must:

- ◆ Camp at least 100 feet from any stream or open water source;
- ◆ Camp at least 200 feet from and out of sight of roads and parking areas;
- ◆ Camp at least 25 feet from and out of sight of any trails;
- ◆ Keep field privies at least 200 feet from any water source;
- ◆ Pack out all trash;
- ◆ Not have campfires when wildfire danger is high.

**MOTORIZED VEHICLES ARE NOT
PERMITTED ON THE TRAILS**

Pennsylvania Bureau of Forestry

Forbes State Forest

Lick Hollow Area/ Whitetail Trail

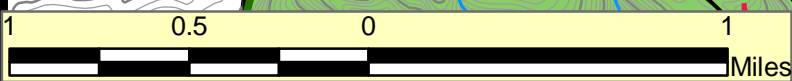
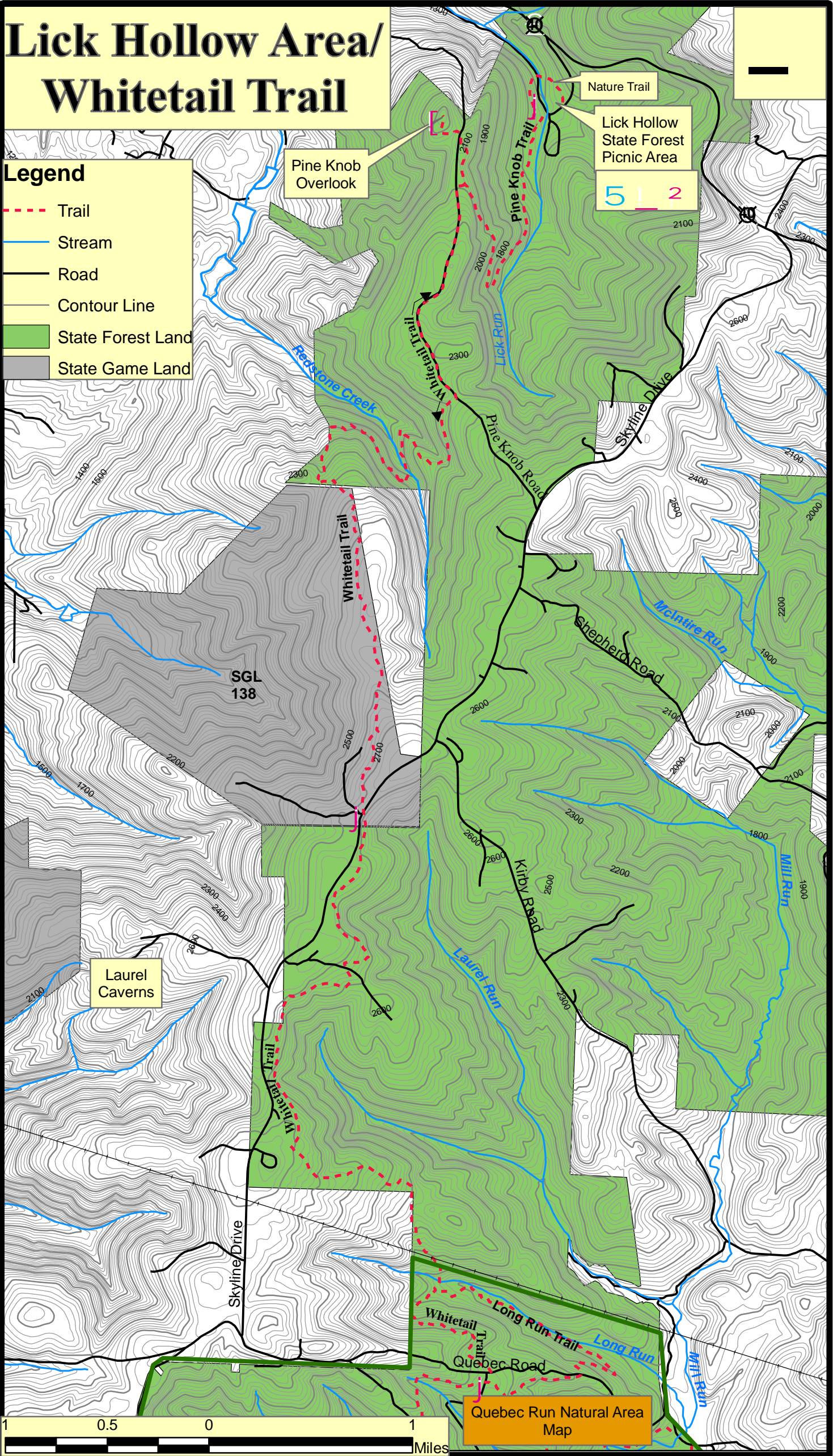


Commonwealth of Pennsylvania
Edward G. Rendell, *Governor*
Department of Conservation and Natural Resources
Michael DiBerardinis, *Secretary*
Visit us at — www.dcnr.state.pa.us
Revised June 26, 2007

Lick Hollow Area/ Whitetail Trail

Legend

- - - Trail
- Stream
- Road
- Contour Line
- State Forest Land
- State Game Land



Quebec Run Natural Area Map